



Holland[®]



2025

**Rail Car
Products Catalog**

AUTORACK PRODUCTS

LocknLoad® Chock

Holland's low profile bi-level chock is compatible with all types of auto rack grating.



LocknLoad® Chock
Installation Video

LocknLoad® Chock



75203 Right Hand LocknLoad®

75203R Right Hand LocknLoad® REFURB

75204 Left Hand LocknLoad®

75204R Left Hand LocknLoad® REFURB

LocknLoad® Storage Pan



74909 Storage Pan

* 2 Well Nut Kits needed per Storage Pan

LocknLoad® Additional Parts



74660 Well Nut Kit

75395 LNL Placard

75690 LNL Placard, Spanish

75691 LNL Placard, French

Tri-Lo Chock

The Tri-Lo Chock answers the industry's need for a low-profile chock for tri-level auto racks. It's lightweight, durable design meets AAR Group D Clearance.



Tri-Lo Chock
Installation Video

Tri-Lo Chock



145470 Tri-Lo Chock – Model 3 w/ Short Strap

145470R Tri-Lo Chock – Model 3 w/ Short Strap – REFURB

Tri-Lo Chock



145480 Tri-Lo Chock – Model 3 w/ Long Strap

145480R Tri-Lo Chock – Model 3 w/ Long Strap – REFURB

Door Defender™

Eliminate door damage with our rugged outdoor-grade polyethylene construction featuring a patented bumper profile that acts as a spring to absorb door impacts.



Door Defender™ Bumpers

75027 94" DD Bumper

75028 96" DD Bumper

75090 60" DD Bumper



74929 Expandable Side Post



71981 Button

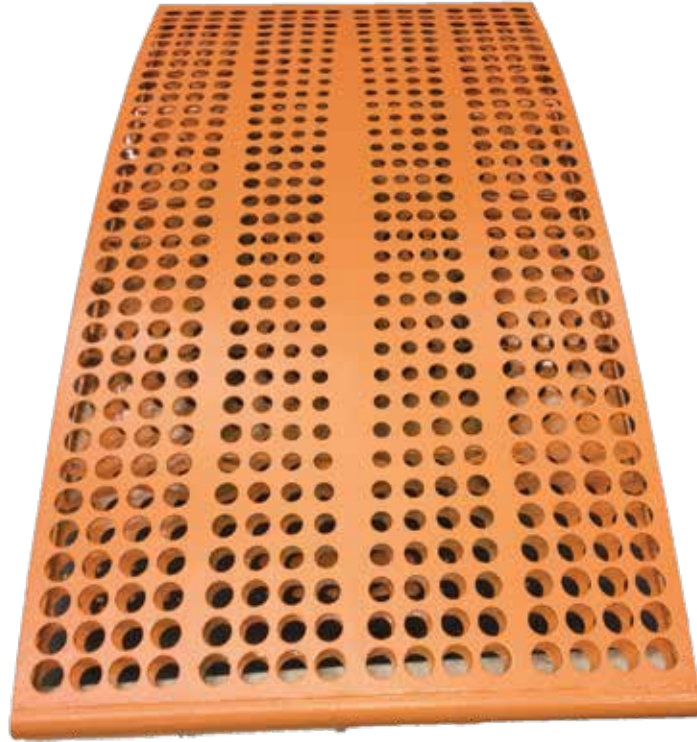


74968 Spring Clip

UNI-LEVEL AUTORACK PRODUCTS

Bridge Plate

SS40004300



Winchock Tie Down

SS20003930 Harness

SS30004001 Right Hand Chock

SS30004002 Left Hand Chock



BOXCAR PRODUCTS

Load Snugger® Wall Anchor



73624 Left Hand Wall Anchor
73625 Right Hand Wall Anchor

Dogbone Anchor



SS20983110

Anchor Lading Strip



SS20983120

4 Slot Anchor



72322

Floor Track



SS75310J

2 Slot Anchor



72870

Strapping and Strapping Accessories

Contact Holland for your custom strapping solution. Personalized colors, lengths, and stencils are available.

Load Snugger® Floor Anchor Assembly



71543 Contact our sales team for a custom colored / stenciled solution

Dogbone Wall Anchor Strapping



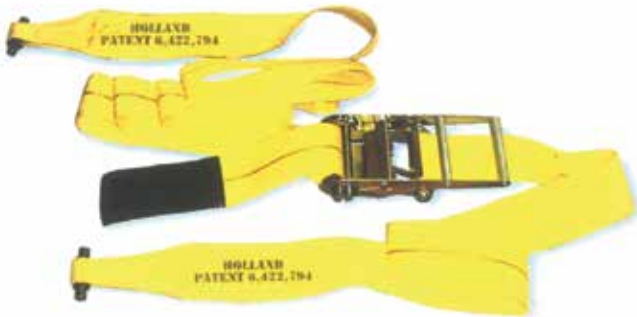
Contact our sales team for specific lengths / colors / stencils to meet your needs

Load Snugger® Harness Assembly



74189-KIT Contact our sales team for specific lengths / colors / stencils to meet your needs

Strapping and Strapping Accessories Continued



Load Snugger® Wall Anchor Pin Hook Strap

Contact our sales team for specific lengths / colors / stencils to meet your needs



Cargo Net System

Contact our sales team for specific configurations / colors / stencils to meet your needs



Corner Protector Composite

73460 50 inch Left Hand

73461 50 inch Right Hand



4" Plastic Corner Protector

73776

FLATCAR PRODUCTS

Chains & Channels

1/2" Standard Chain Assembly



SS00972570 1/2" Heavy Duty Chain Assembly w/ Mechanical Coupling Link

SS20972570 1/2" Heavy Duty Chain Assembly w/ Mechanical Coupling Link & Anchor

SS00972571 1/2" Heavy Duty Chain Assembly w/out Mechanical Coupling Link

AAR Approved • Chain assembly working load limit: 13,750 lbs • Minimum breaking strength is 55,000 lbs.

3/8" Standard Chain Assembly



SS10118000 3/8" Chain Assembly w/ Winch

SS20975400 3/8" Chain Assembly w/out Winch

SS00116970 3/8" Chain, Winch / Anchor Assembly

AAR Approved • Chain assembly working load limit: 9,000 lbs • Minimum breaking strength is 36,000 lbs.

Multi-Purpose Chain



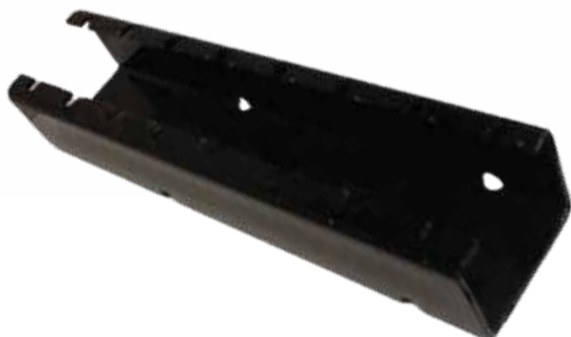
75660 1/2" MPC Assembly

AAR Approved • Chain assembly working load limit: 13,750 lbs • Minimum breaking strength is 55,000 lbs



Ratchet Wrench

SS30980210 Interfaces with all Holland 1/2" Chains



Deck Channel

75403 Anchor Channel, A-572 GR 50, 10'

75423 Anchor Channel, A-572 GR 50, 60"

75404 Anchor Channel, A-572 GR 50, 45"

75424 Anchor Channel, A-572 GR 50, 60", Low Profile

Interfaces with all Holland chain assemblies

Locks

Meets AAR M-952 Automatic Intermodal Container Lock Specifications • Specialized coating to extend life of the lock in harsh conditions • Repair Latch Kits installed without removal of housing using standard tools



Low Profile Lock

72280 LP II Lock

73243 LP II Lock, Coated



Conversion Low Profile Lock

72676 LP II Lock, Conversion



Bolt On Low Profile Lock

73445 LP II Lock, Bolt On

All mounting hardware included



Repair Latch Kit

72704 LP II Latch Repair Kit

FLAT CAR ACCESSORIES

Web Winch



SS10223710

Cable Winch



SS20227570

Web Cable Winch



SS10229610

Winch Wire & Webbing



Contact our sales team for specific lengths / configurations to meet your needs

Tie Rods



Contact our sales team for specific lengths to meet your needs

Tie Rod Chains



Contact our sales team for specific lengths / configurations to meet your needs



Stake Pocket Anchors

SS30488700

ASSORTED RAILCAR PRODUCTS

Cross Bar Liners



- 0024976** Crossbar Lining, 66"
- 71434** Crossbar Lining, 63"
- 71435** Crossbar Lining, 58"
- 72015** Crossbar Lining, 42-½"
- 71539** Crossbar Lining, 33"
- 71215** Crossbar Lining, 30"
- 143873** Crossbar Lining, 21"
- 71436** Crossbar Lining, 19-¼"
- 73061** Crossbar Lining, 15"
- 72765** Crossbar Lining, 13"

Brake Chain



Contact our sales team for specific lengths / configurations to meet your needs

Straps



Contact our sales team for specific lengths / colors / stencils to meet your needs

ENGINEERING & MANUFACTURING CAPABILITIES

Our founder, Cyrus Holland, began our history of providing rail car products in 1935 and his legacy continues to this day. Ensuring your cargo arrives at its destination safely and undamaged is the primary objective of Holland's line of rail car products, whether securing containers, safeguarding automobiles, or protecting lading against shifting en route. Used in broad applications such as container securement or in narrower product-specific applications, Holland can address your product transportation concerns.

Our manufacturing and engineering teams are committed to providing innovative solutions and designs within our 185,000 square foot lean manufacturing space. This space is located just outside of Chicago, IL and features:

- Cellular Manufacturing Assembly Area
- Moving Production Assembly Line
- Custom/Specialty Fabrication Area
- 64' x 20' Commercial Paint Booth
- 20' x 12' Cleaning/Prep Room
- 9' x 12' Mixing Room

Our highly skilled team of engineers provides solutions for our customers when it comes to custom products to secure goods traveling by rail. Our engineering team consists of:

- Mechanical, Electrical, Hydraulics, Pneumatics, Value Engineering Group, Research & Development
- Concept, Prototype, Production Development and Implementation
- In-house 3D printing capability

The Holland Mechanical group is ISO-9001 certified and we are proud to have received TTX Company's Supplier Evaluation Committee (SECO) Excellent Supplier Award in 2022 as well as over 15 times in our history.



The background of the entire page is a blue-tinted photograph of a rail car. The rail car is positioned on tracks, and its side is visible, showing a large, dark, rectangular structure. The text is overlaid on this background.

Holland[®] Rail Car Products

#HollandRail

hollandco.com
sales@hollandco.com
708-672-2300

1000 Holland Drive
Crete, IL. 60417